

THE SHREWD MANAGER

Luke 16:1-15

Luke 16

¹Jesus told his disciples: “There was a rich man whose manager was accused of wasting his possessions. ²So he called him in and asked him, ‘What is this I hear about you? Give an account of your management, because you cannot be manager any longer.’

³“The manager said to himself, ‘What shall I do now? My master is taking away my job. I’m not strong enough to dig, and I’m ashamed to beg—⁴I know what I’ll do so that, when I lose my job here, people will welcome me into their houses.’

⁵“So he called in each one of his master’s debtors. He asked the first, ‘How much do you owe my master?’

⁶“‘Eight hundred gallons of olive oil,’ he replied.

“The manager told him, ‘Take your bill, sit down quickly, and make it four hundred.’

⁷“Then he asked the second, ‘And how much do you owe?’

“‘A thousand bushels of wheat,’ he replied.

“He told him, ‘Take your bill and make it eight hundred.’

⁸“The master commended the dishonest manager because he had acted shrewdly. For the people of this world are more shrewd in dealing with their

own kind than are the people of the light. ⁹I tell you, use worldly wealth to gain friends for yourselves, so that when it is gone, you will be welcomed into eternal dwellings.

¹⁰“Whoever can be trusted with very little can also be trusted with much, and whoever is dishonest with very little will also be dishonest with much. ¹¹So if you have not been trustworthy in handling worldly wealth, who will trust you with true riches? ¹²And if you have not been trustworthy with someone else’s property, who will give you property of your own?

¹³“No servant can serve two masters. Either he will hate the one and love the other, or he will be devoted to the one and despise the other. You cannot serve both God and Money.”

¹⁴The Pharisees, who loved money, heard all this and were sneering at Jesus. ¹⁵He said to them, “You are the ones who justify yourselves in the eyes of men, but God knows your hearts. What is highly valued among men is detestable in God’s sight.

THE SHREWD MANAGER

Luke 16:1-15

POSSIBLE POINTS	MY POINTS	QUESTIONS
5		1.) Why did the rich man fire his manager? (Verse 1)
5		2.) What did the manger do to please the people who owed the rich man money?
5		3.) Why was the rich man pleased with what the manger did? (Verse 8)
5		4.) Why do you think the manger reduced what was owed to the rich man?

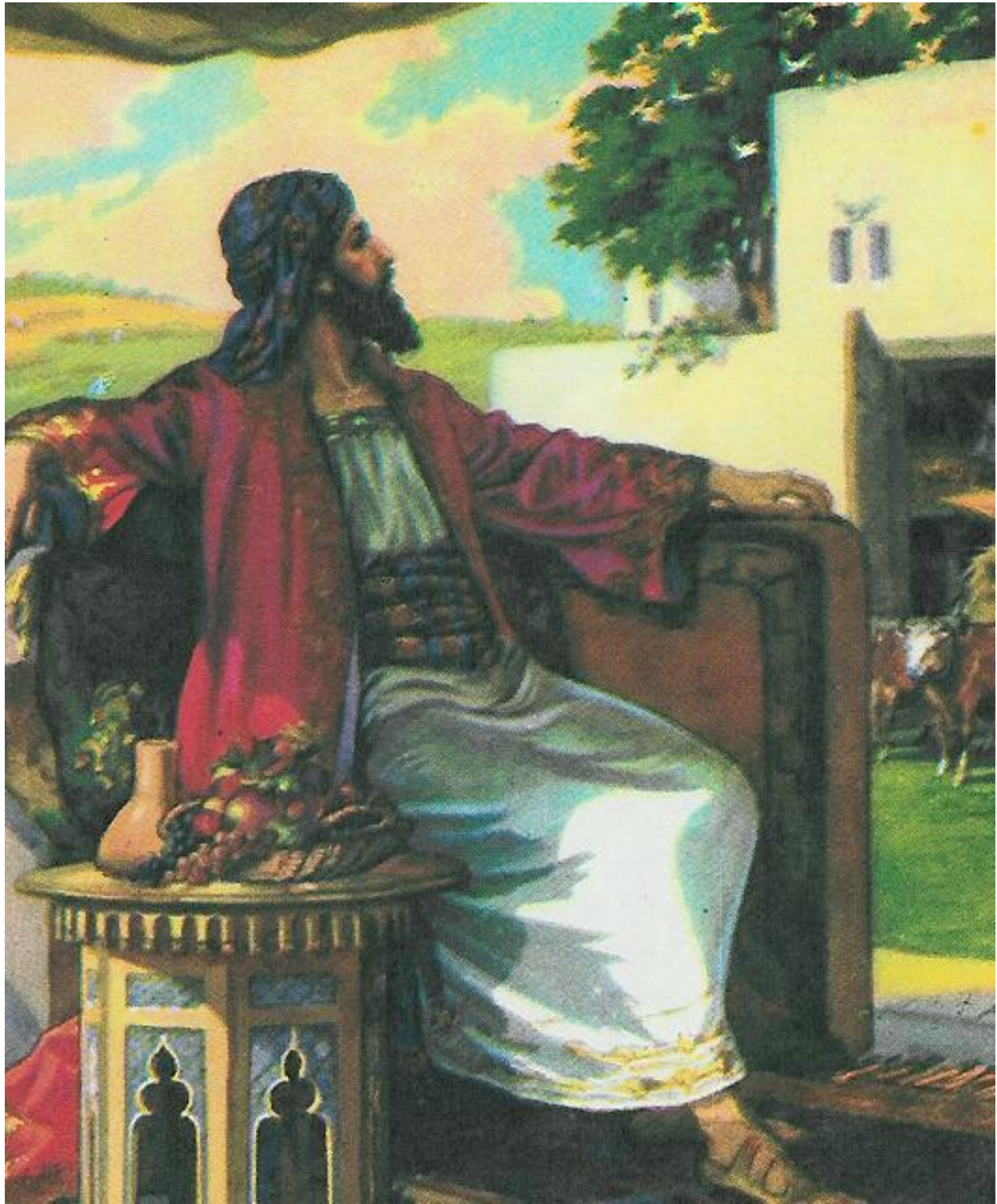
POSSIBLE POINTS	MY POINTS	MEMORY VERSE
10		"Whoever can be trusted with very little can also be trusted with much..." Luke 16:10

POSSIBLE POINTS	MY POINTS	HOME CONNECTION	PARENT/GUARDIAN SIGNATURE
5		<i>I have read, or been read, the passage of scripture for this week.</i>	
5		<i>I have answered the questions aloud to an adult at home this week.</i>	
10		<i>I have recited the memory verse out loud to an adult at home this week.</i>	

TOTAL POINTS	CLUB CONNECTION
	LEADER'S SIGNATURE _____ DATE ___/___/___

THE SHREWD MANAGER

Luke 16:1-15



Picture from *The Bible in Pictures for Little Eyes* by Kenneth N. Taylor. Moody Press: Copyright © 1956.

THE SHREWD MANAGER

Luke 16:1-15



The rich man fired his manager for wasting his possessions

THE SHREWD MANGER

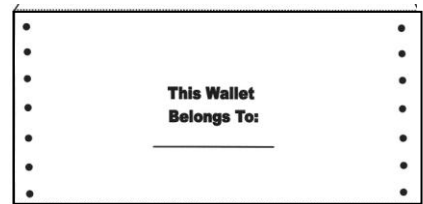
Luke 16:1-15

CRAFT/ACTIVITY: WALLETS

Students will make a wallet to remind them that the manager of a rich man acted shrewdly with the money owed to the rich man.

MATERIALS

1. 67 lb. Cardstock
2. Wallet Pattern
3. Crayons, Markers, or Colored Pencils
4. Scissors
5. Yarn
6. Adhesive Velcro Squares
7. Fake Money



DIRECTIONS

1. Make copies of the wallet pattern onto 67lb. cardstock for each student.
2. Have students cut out the wallet on the solid black lines.
3. Allow students to fold the wallet on the dotted lines.
4. Students may color designs on their wallets with crayons, markers, or colored pencils.
5. With the wallet folded into shape, punch holes through the black dots.
6. Instruct students to “sew” both sides of the wallet together.
7. Use Velcro squares to keep the wallet shut.
8. Put fake money in the wallet.

FOR DISCUSSION

As students are working on their wallets, remind students how the manger of the rich man’s money was not doing his job well. When he knew he was about to loose his job, he went around to those who owed the rich man money and cut down their debts to gain favor with them. When he was out of a job, he was hopeful that they would consider taking him in. The rich man commended the manger’s shrewd actions.

TIME NEEDED TO COMPLETE:

Approximately 15 minutes

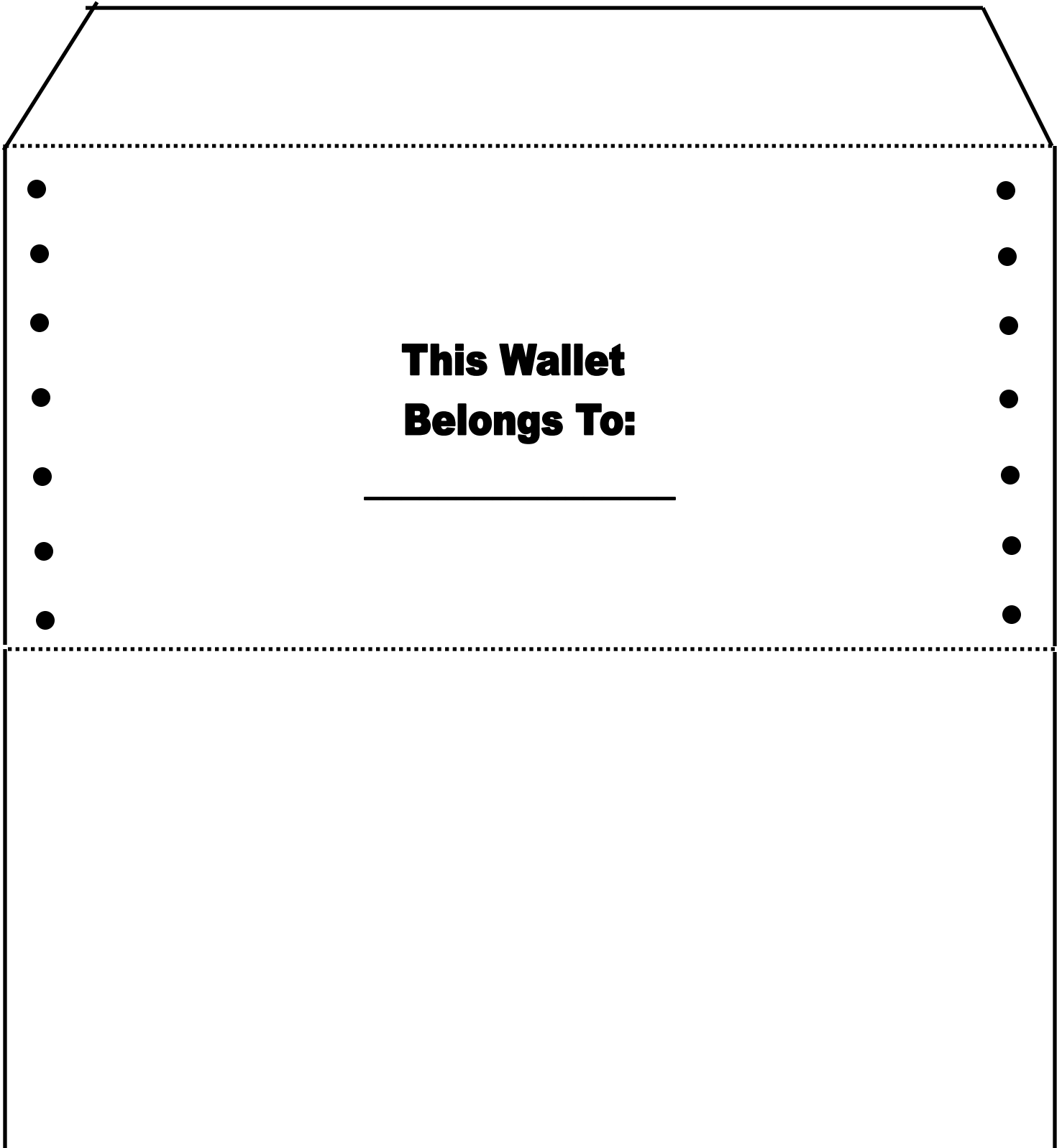
MEMORY VERSE

“Whoever can be trusted with very little can also be trusted with much...” Like 16:10

THE SHREWD MANGER

Luke 16:1-15

WALLET PATTERN

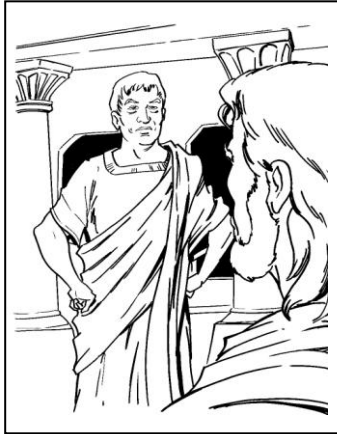


**This Wallet
Belongs To:**

THE BIBLE TIMES HERALD

A SPECIAL REPORT ON LUKE 16:1-15

THE SHREWD MANAGER



Jesus told his disciples a parable about a rich man who accused his manager of wasting his possessions. The rich man called the manager in

and asked he explain what had happened. The manager knew that he was about to get fired from his job, so he came up with a plan. He decided to do nice things for those who owed debt the rich man money. That way, when he lost his job, he would be treated well by the people he was nice to. The manager reduced the amount that the people owed the rich man.

The rich man was impressed because the manager acted wisely.

Jesus said, "Whoever can be trusted with very little can also be trusted with much, and whoever is dishonest with very little will also be dishonest with much. No servant can serve two masters. You cannot serve both God and money."

For more on this story, read Luke 16:1-15 in your Bible.

QUESTIONS

1. Why did the rich man fire his manager?
2. What did the manger do to please the people who owed the rich man money?
3. Why was the rich man pleased with what the manger did?
4. Why do you think the manager reduced the amount owed to the rich man?

MEMORY VERSE

"Whoever can be trusted with very little
can also be trusted with much..."

Luke 16:10

WORD SEARCH

D E R I F G C S O M
S H R Y C H H T O A
J K C O L R E B G N
U N M I E S J E I A
Z U W W R E S D A G
A D D N S S D R A E
X L M P H E S E C R
F N W S N L E F G V
N Q O G H T O P L Y
H U C N E O X C R M

DEBT
FIRED
MANAGER
RICH
SHREWD